



POLMOR

**Polmor Steel Pvt. Ltd., Plot No: 26H TO 26K TSIC Industrial park, Muppireddy palli village,
Manoharabad Mandal, Medak District-502336 (HYDERABAD). Website: www.polmor.in
Contact No.: +91 -733733 7870 / 733733 7871**

POLMOR

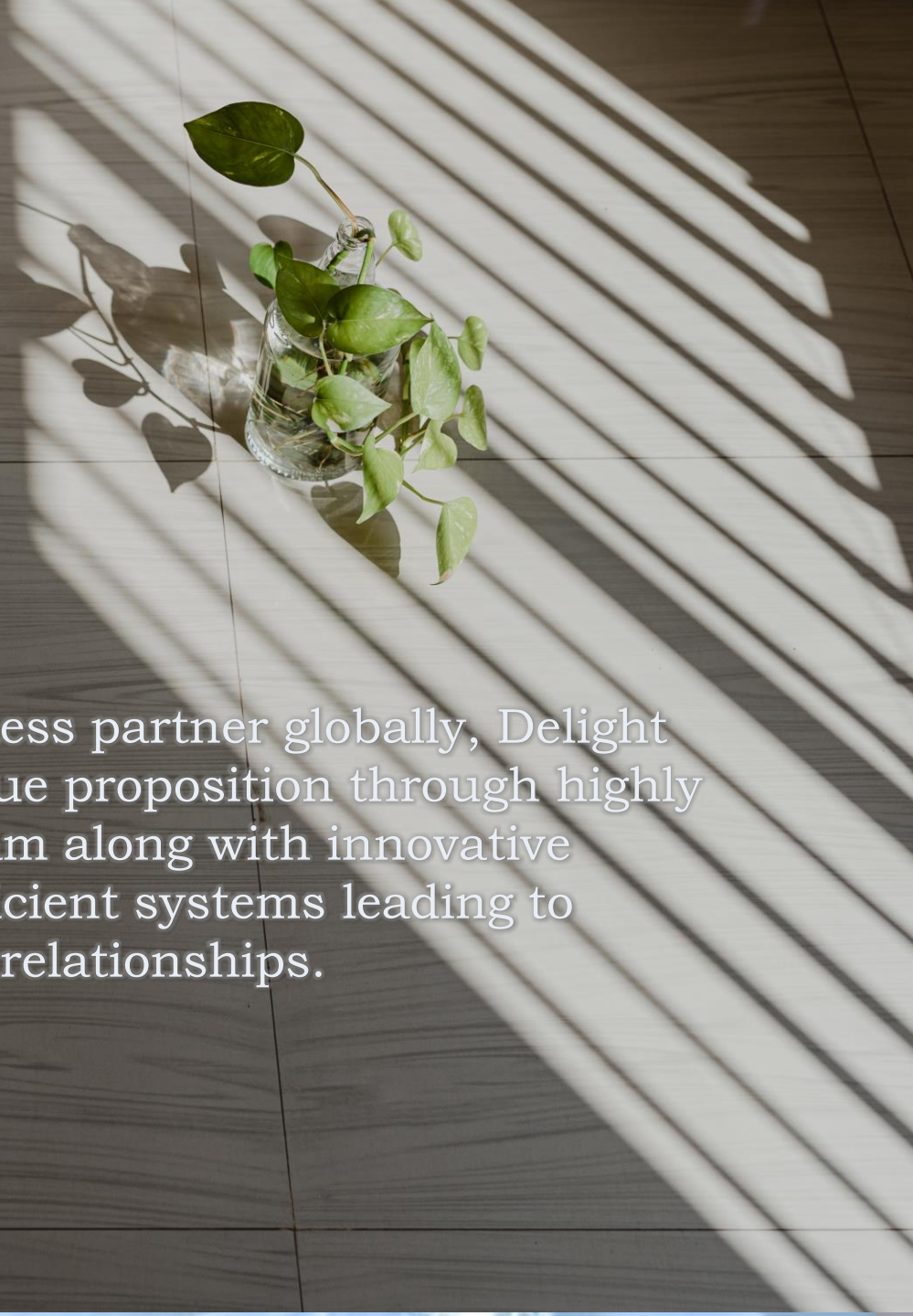


Poland



India

POLMOR VISION



To be preferred and respected business partner globally, Delight customers by offering exceptional value proposition through highly motivated and extraordinary team along with innovative technologies and world class efficient systems leading to sustainable business relationships.



Steel Pvt Ltd. Board



MANAGING DIRECTOR

V R SUBBA RAO KALAKONDA

Phone: +91 98495 44666

E-mail: subbarao.kalakonda@polmor.in

DIRECTOR

Bogdan Lubiński

Phone: +48 59 822 30 84 ext. 208

E-mail: bogdan.lubinski@polmor.pl

DIRECTOR

Roger van Steensel

Mobile: +48 600 09 15 50

E-mail: roger.vansteensel@polmor.pl

DIRECTOR

Piotr Smorawski

Mobile: +48 600 35 24 31

E-mail: piotr.smorawski@polmor.pl

HEAD OF FINANCE

Balaraju Vanga

E-mail: balaraju.vanga@polmor.in

HEAD OF PROJECTS

Karunakar Mokara

E-mail: karunakar.mokara@polmor.in

HEAD OF PURCHASE

Nikhil kumar Sagi

E-mail: purchase@polmor.in

HEAD OF QUALITY

Ravi Chandrasekhar Yellapanthula

E-mail: ravichandrasekhar.yellapanthula@polmor.in

HEAD OF ENGINEERING

Ram Garikapati

E-mail: ram.garikapati@polmor.in

HEAD OF PRODUCTION

Naveen kumar Pandi

E-mail: naveenkumar.pandi@polmor.in

HEAD OF PLANNING

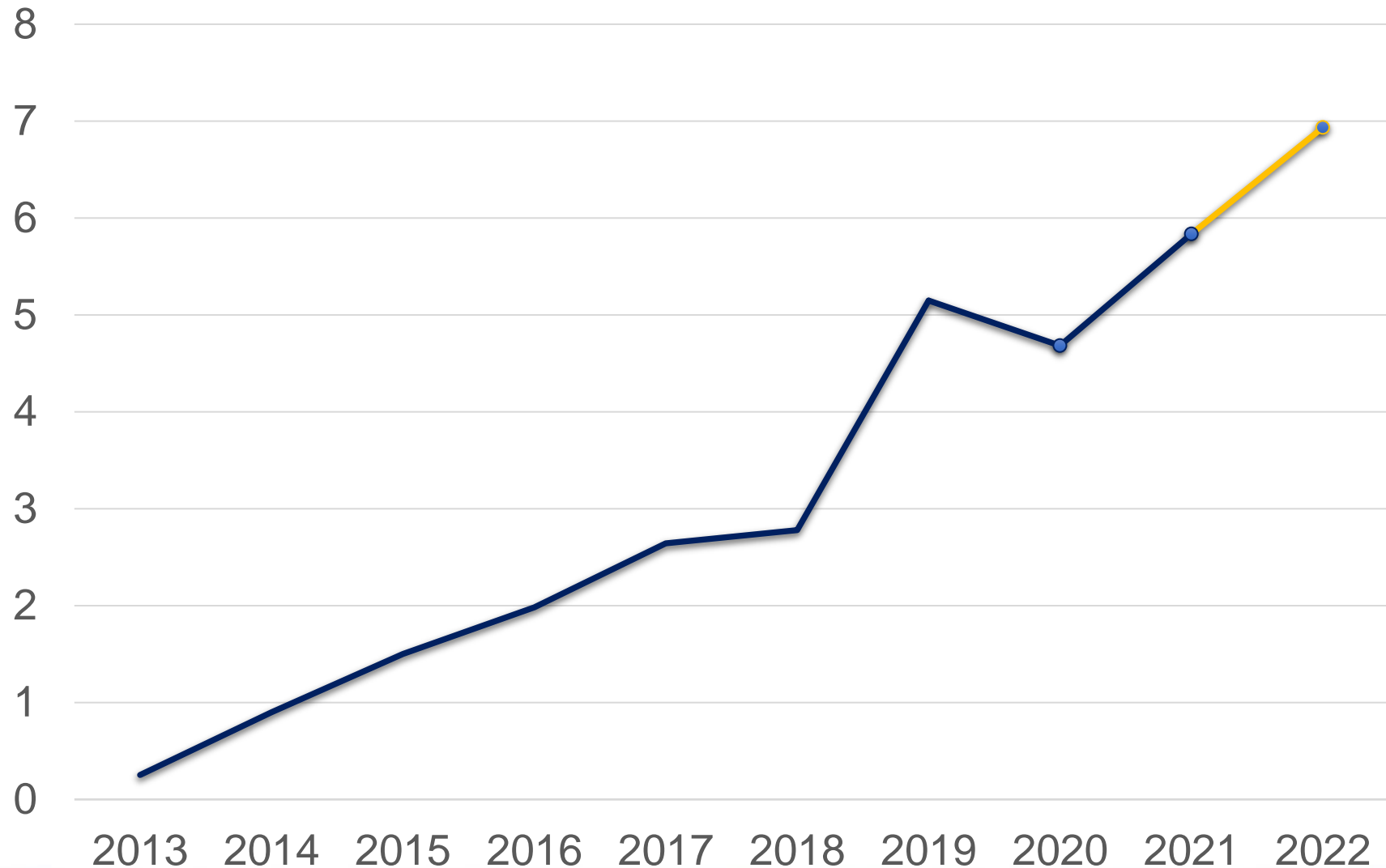
Gopi Krishna Kolleru

E-mail: gopikrishna.kolleru@polmor.in

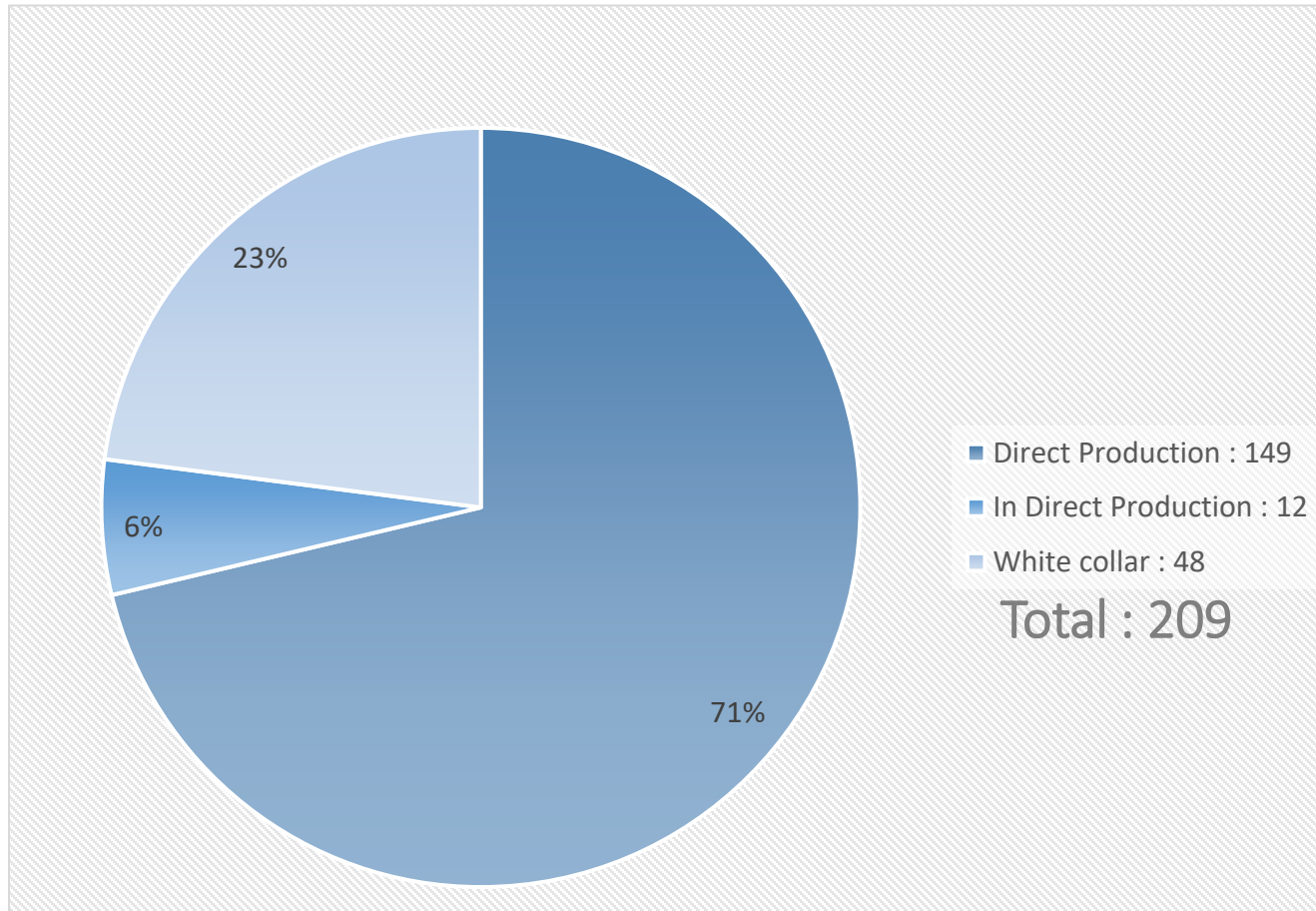
Our Journey.....

- In the year 2009, Polmor Sp. Z.o.o ,Bytow, Poland has started its 100% subsidiary Indian manufacturing unit in Hyderabad named Polmor Steel Private Limited targeting the core experience of Polmor of components manufacturing for Metro rail industry.
- The strategic location allows us to position ourselves in epicentre for all our main customer spread pan India like Alstom-Coimbatore & Sricity, SAFT-Bangalore, ABB-Pune (Hitachi Energy), Siemens-Nasik.
- The first project Polmor Steel India has take up is Battery containers for BT – RS 2 Project for DMRC.
- Progressively the projects are increasing and the corresponding technical force is also increased who are highly qualified and professionally trained and experienced in their arena.
- Today we proudly say that Polmor Steel India has 200+ technical staff with own manufacturing facility of 7,500 Sq. Meters spread over 12,140 Sq. Meters area.
- Our supplies serves both global and domestic rail manufacturers.

SALES TREND IN MILLION EURO



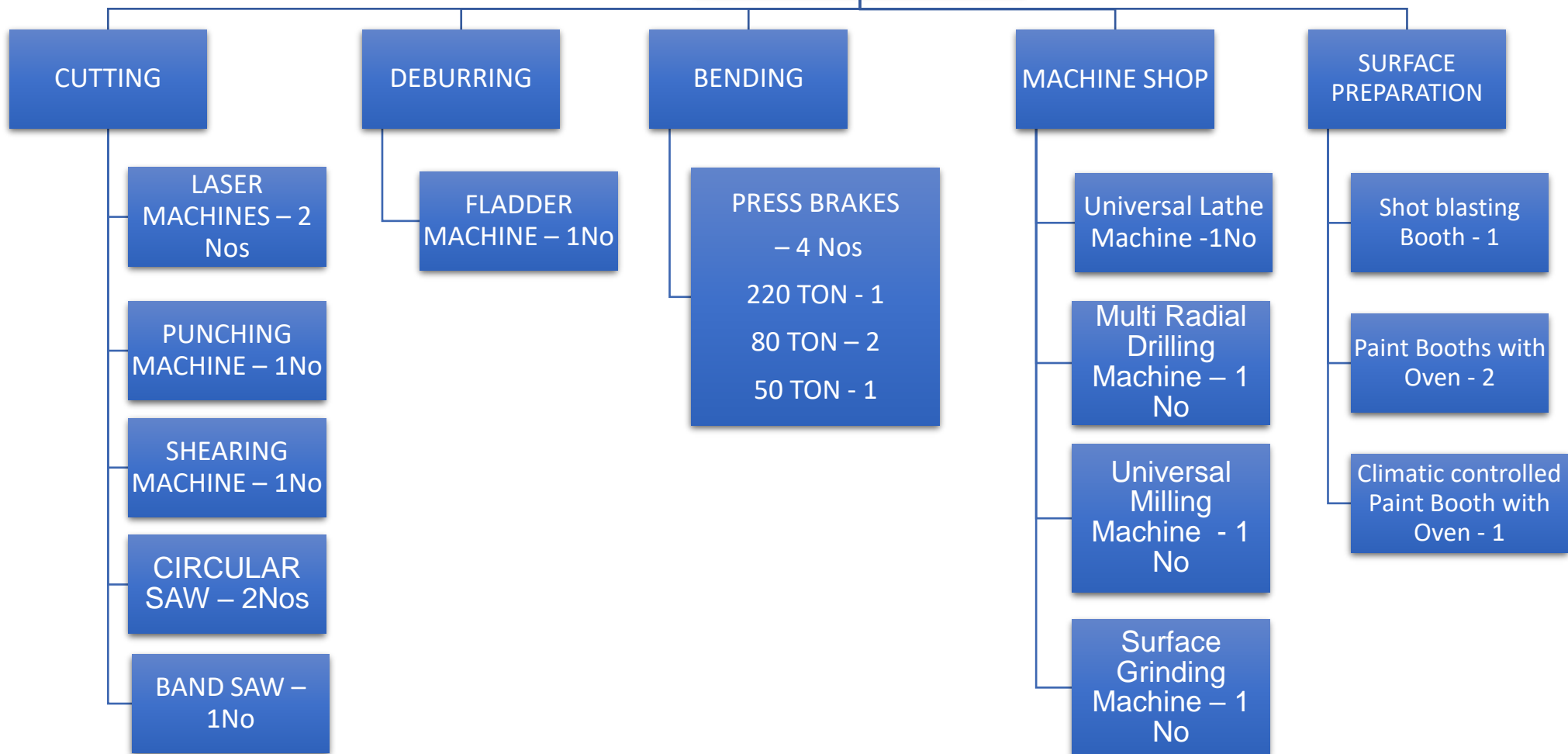
ORGANIZATION CHART



Benefits for Polmor Steel in co-operation with Polmor Poland

- Transfer of technical know-how
- Transfer of management experience
- Education/ trainings
- Supervision/ maintenance by experienced personnel
- Investments in equipment and facilities

The company specializes in the production of highly complex products based on the use of cutting processes, bending, drilling holes and special processes: welding and wet painting.

INHOUSE FACILITIES

Facilitate introduction of climatic paint-booth for waterborne paint system of environmentally friendly surface treatment



- 115 TR Chiller capacity
- 35.000 cubic meter per hour cooling capacity of AHU Unit
- De – Humidification automatic system integrated with RO water system
- Rail-up lifting system

This features allow us continuously maintain the painting operational temperature within the range of 21-26°C and simultaneously control the relative humidity between 40 and 60%.

PRODUCTION HALLS



**ALL TOGETHER 7,000 M², DIVIDED TO CARBON STEEL,
STAINLESS STEEL, ALUMINUM FABRICATION HALLS &
MECHANICAL ASSEMBLY HALL**

MANUFACTURING PROCESSES

CUTTING

BENDING

MILLING

TURNING

LOCKSMITH

WELDING
MIG/MAG/TIG

SHOT-
BLASTING

DEGREASING

GLUING

WET
PAINTING

MECHANICAL
ASSEMBLY

POLMOR PRODUCTS / RAILWAY INDUSTRY



TRACTION TRANSFORMER TANK

Material:	Manufacturing::	Surface treatment::
Carbon Steel	Welding	Wet Painting



PART OF PASSENGER TRAIN ROOF

Material:	Manufacturing::	Surface treatment::
Stainless Steel	Welding	N/A

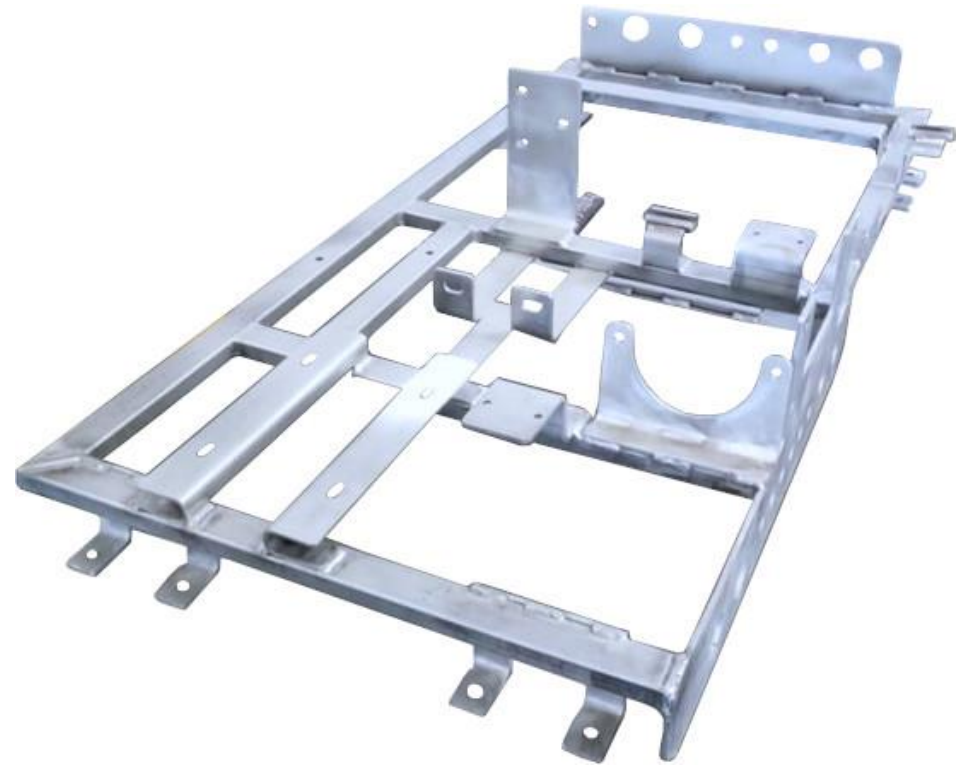


POLMOR PRODUCTS / RAILWAY INDUSTRY



CRASH ABSORBER

Material:	Manufacturing:	Surface treatment:
Carbon Steel	Welding	Wet Painting



PART OF PNEUMATIC BRAKE FRAME

Material:	Manufacturing:	Surface treatment:
Stainless Steel	Welding	N/A



PART OF BATTERY SYSTEM STRUCTURE

Material:	Manufacturing:	Surface treatment:
Carbon steel	Welding	N/A



PART OF BATTERY SYSTEM - TRAY

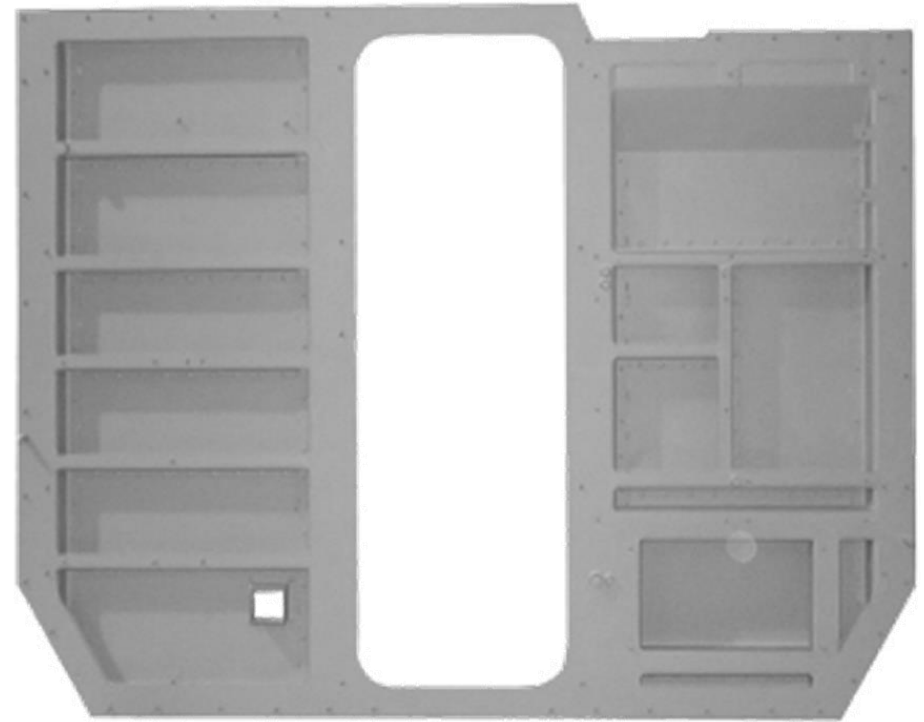
Material:	Manufacturing:	Surface treatment:
Carbon steel	Welding	N/A

POLMOR PRODUCTS / RAILWAY INDUSTRY



TRAIN SANDING BOX

Material:	Manufacturing::	Surface treatment::
Stainless Steel	Welding	N/A



LOCOMOTIVE PARTITION WALL

Material:	Manufacturing::	Surface treatment::
Aluminium	Welding	N/A

POLMOR PRODUCTS / RAILWAY INDUSTRY



BATTERY BOX

Material:	Manufacturing:	Surface treatment:
Stainless Steel	Welding	N/A



BATTERY BOX

Material:	Manufacturing:	Surface treatment:
Stainless Steel	Welding	N/A

POLMOR PRODUCTS / RAILWAY INDUSTRY



TRAIN TRACTION CONVERTER HOUSING

Material:
Magnelis

Manufacturing:
**Screw &
Glue**

Surface treatment:
Wet Painting



TRAIN TRACTION CONVERTER HOUSING

Material:
**Galvanised steel
/ Aluminium**

Manufacturing:
**Screw &
Glue**

Surface treatment:
Wet Painting

POLMOR PRODUCTS / RAILWAY INDUSTRY



TRAIN CONVERTER STATIC HOUSING

Material:
Magnelis

Manufacturing:
Screw &
Glue

Surface treatment:
Wet Painting



TRAIN INVERTER HOUSING

Material:
POSMAC
(PM3HT 440C)

Manufacturing:
Screw &
Glue

Surface treatment:
N/A

POLMOR PRODUCTS / RAILWAY INDUSTRY



TRAIN INVERTER HOUSING

Material:
Aluminium /
Stainless Steel

Manufacturing:
Screw &
Glue

Surface treatment:
Wet Painting



TRAIN INVERTER HOUSING

Material:
Aluminium
/Stainless Steel

Manufacturing:
Screw &
Glue

Surface treatment:
Wet Painting



POLMOR PRODUCTS / RAILWAY INDUSTRY



BATTERY BOX

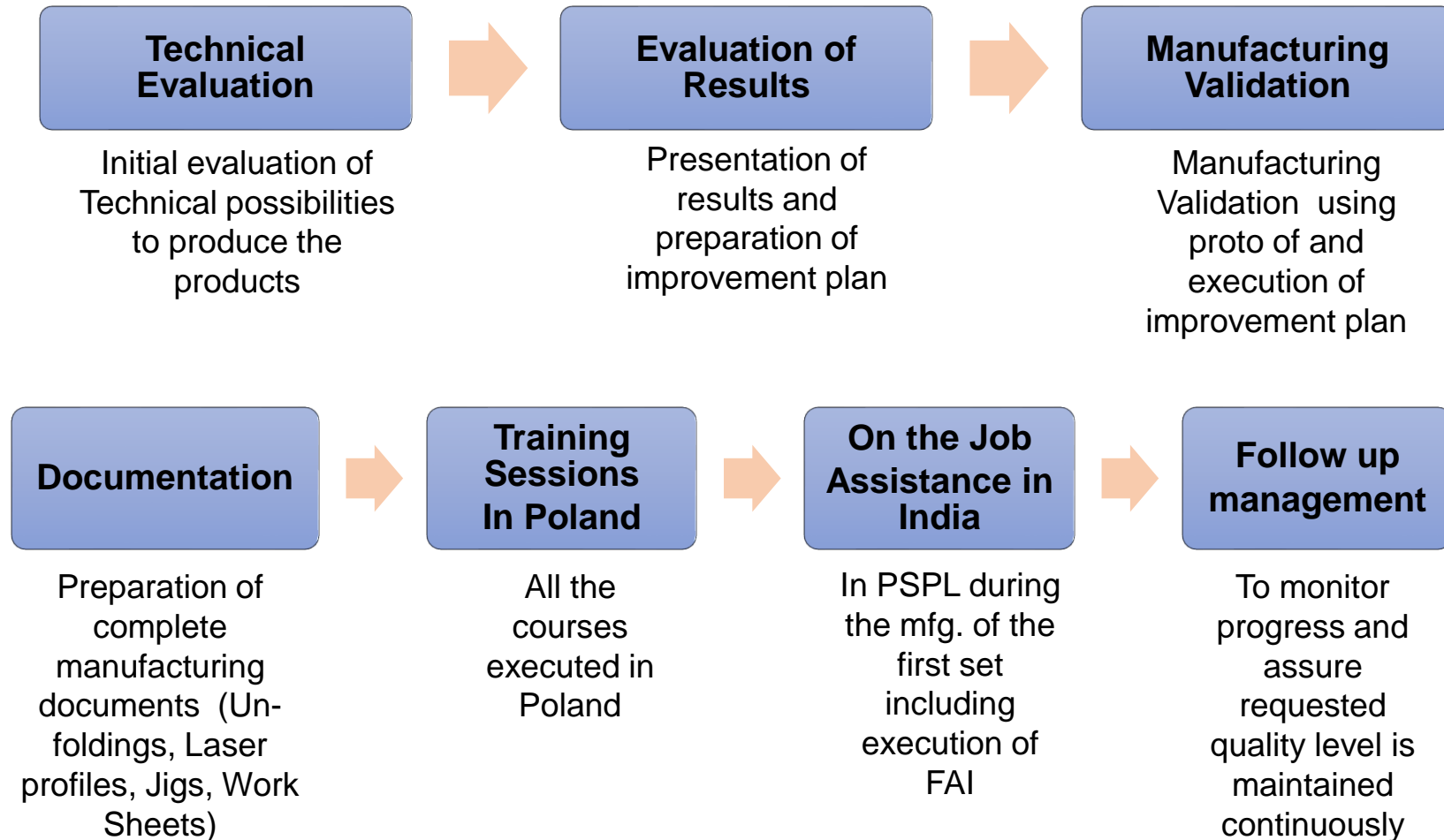
Material: Stainless Steel	Manufacturing: Welding	Surface treatment: Wet Painting
-------------------------------------	----------------------------------	---



BATTERY BOX

Material: Stainless Steel / Carbon steel	Manufacturing: Welding	Surface treatment: Wet Painting
---	----------------------------------	---

Typical ToT / Industrialization Assistance

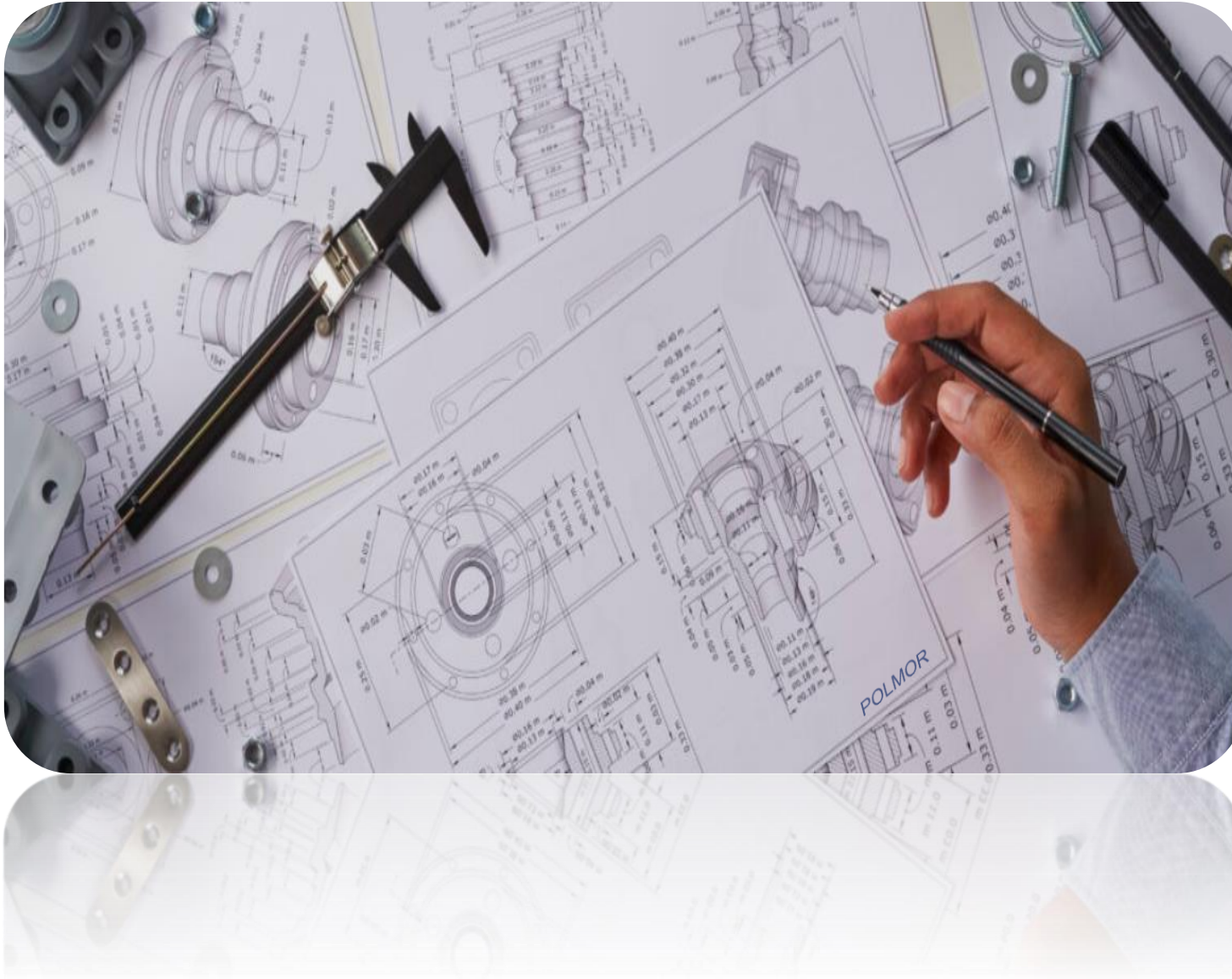


Projects with ToT from Poland



Project	Customer	Project	Customer
Chennai Metro – Traction Housing	Alstom	Chennai Metro – Battery Box	Saft
XCC EMS / X60 BB NG – Traction Housing	Alstom	Lucknow Metro – Battery Box	Saft
RIYADH – Traction Housing	Alstom	E-Loco– Battery Box	Saft
TRENITALIA Traction Housing	Alstom	Montreal – Battery Box	Saft
TRENITALIA Static Convertor Housing	Alstom	DRMC – Battery Box	Bombardier
ICNG Traction Housing	Alstom	QNGR – Battery Box	Bombardier
ICNG Static Convertor Housing	Alstom	PP – Battery Box	Alstom
TTNG AEL 1 & 2 – Electrical Equipment case	Alstom	PP – Roof Cabin	Alstom
HANOI – Traction Housing	Alstom	Chennai, Lucknow, Sydney, Hanoi, Dubai, PP, Trenitalia, RER – Absorbers	Alstom
HANOI Static Convertor Housing	Alstom		
E-LOCO (E-BLOC & HV) Housing	Alstom		
URJA Invertor Housing	Siemens		
S70 Invertor Housing	Siemens		

POLMOR PRODUCTION PREPARATION



TECHNOLOGISTS: 4

WELDING SUPERVISOR: 2

CNC PROGRAMERS: 2

GLUING SUPERVISOR : 1

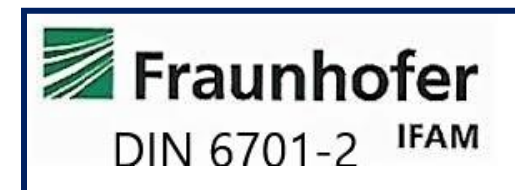
SOFTWARE CAPABILITIES

CATIA V5

DRAFTSIGHT

POLMOR CERTIFICATES

- ISO 9001: 2015 Certified by TUV, INDIA (excluded: Design & Development)
- EN 15085-2 Certified by TUV NORD
- DIN 6701 - 2 Certified by IFAM FRAUNHOFER, GERMANY



POLMOR CLIENTS

ALSTOM

saft

 **Hitachi Energy**

 **SERVOMAX**®

BOMBARDIER
the evolution of mobility

SIEMENS
Ingenuity for life

 **MEDHA**™



Thank You

POLMOR[®]

POLMOR[®]